

PROJECT STATUS UPDATE FEBRUARY 1, 2021

Following a series of community meetings held by the City of Chicago, on Saturday, June 27, 2020, the demolition contractor at Exchange 55, Heneghan Wrecking & Excavation Co., Inc., (Heneghan) hosted a bilingual Virtual Community Meeting to review the details about the upcoming demolition, timeline and dust mitigation plan for the remaining structures at the site of the former Crawford Station power plant located at 3501 South Pulaski Road.

[Click to see the Exchange 55 Demolition Overview presentation shared at the June 27 Virtual Community Meeting.](#)

[Click to see HRP responses to questions submitted by LVEJO for the June 27 Virtual community meeting.](#)

CONSTRUCTION STATUS AS OF FEBRUARY 1, 2021

Construction activity at the site is ongoing and the new building structure is approximately 80% complete. Morgan/Harbour Construction LLC is the general contractor performing and overseeing the work accordance with the requirements established by the City of Chicago and scope of work permitted under the Department of Buildings Core and Shell Permit as well as Interior Buildout Permit.

Vertical construction work consisting of steel erection, precast wall installation, roof construction, and related infrastructure is substantially complete, and interior buildout of offices, break rooms, and other interior improvements continues. This work is ongoing and will continue until the shell core work and interior buildout work is completed.

Morgan/Harbour Construction LLC current construction activities include:

- Mass grading on the West portion of the site
- Building pad construction complete as of October 2020
- Site utility installation at the South end of the site is complete as of December 2020
- Site utility installation at Northwest site area is complete as of November 2020
- Precast panel installation is complete as of October 2020
- Structural Steel installation is 100% complete as of November 2020
- Landscaping installation has commenced at the east bio-swales and will continue in Spring and Summer 2021
- Parking lot paving of the North and East parking areas is complete as of September 2020
- Northwest and West parking lot paving is complete as of November 2020
- Concrete pavement of east parking lot is complete as of September 2020
- Exterior precast painting is 100% complete as of November 2020
- Interior mechanical, electrical, and plumbing continues and will be ongoing until the completion of the project
- Interior build-out continues and will be complete Summer 2021
- Roofing installation is complete as of December 2020
- Floor pours are complete as of January 2021

DEMOLITION STATUS AS OF FEBRUARY 1, 2021

The demolition activity at the site is substantially complete with the Unit 7 superstructure as illustrated on the diagram below being demolished as of January 2021. The demolition of the remaining four auxiliary structures will be conducted using a manual process that does not utilize an implosion.

- A visual map of the current state of activity is below:
 - All areas highlighted in red have been demolished.
 - All areas highlighted in yellow are currently in progress of the demolition process

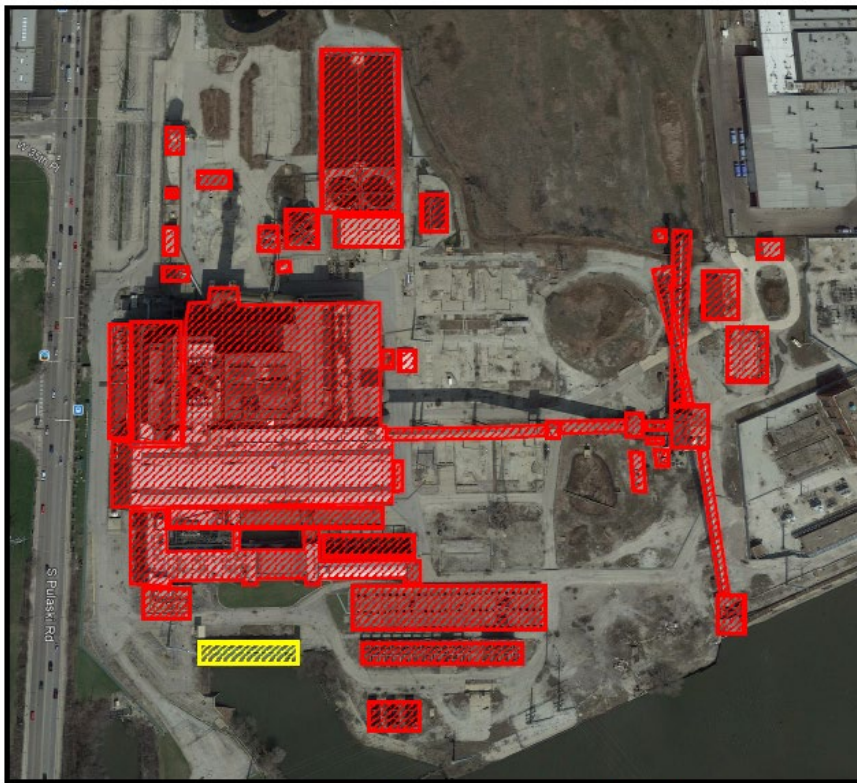
Details of demolition progress include:

Ongoing and routine dust suppression in conformance with dust mitigation plans approved by the City of Chicago

- Material sorting and recycling of demolition debris
- Interior abatement of friable asbestos containing materials (ACM) is complete with all identified and abated ACM properly removed from the site
- Removal of Galbestos panels, a non-friable material complete as of January 2021 Remaining ancillary structure demolition has commenced
- 98% of reusable demolition materials will be processed and recycled

All remaining demolition work is being conducted by Heneghan Wrecking & Excavation Co., Inc., in accordance with the dust mitigation plans that have been approved by the City of Chicago Department of Buildings and the City of Chicago Department of Public Health. The approved dust mitigation plans can be found at <https://www.crawfordstation.com/dust-mitigation-plan/>.

EXCHANGE 55 - DEMOLITION PROGRESS UPDATE



SCHEDULED
 IN PROGRESS
 COMPLETE

35 of 43 Structures Complete		ENVIRONMENTAL	DEMOLITION
		99%	99%
ID	BUILDING / STRUCTURE ID	ENVIRONMENTAL	DEMOLITION
1	Old Switch Relay Deck	✓	✓
2	Old Elevated Switch Relay Matrix	✓	✓
3	Pulverizer Structure (Crusher House)	✓	✓
4	Central Conveyor East	✓	✓
5	Central Conveyor West	✓	✓
6	Fly Ash Water Processing Tank - South	✓	✓
7	Fly Ash Water Processing Tank - North	✓	✓
8	Elevated Bottom Ash Delivery Tanks	✓	✓
9	Emergency Services Building (Locomotive Building)	✓	✓
10	Pulverizer Loading Building	✓	✓
11	Upper Leg of North Conveyor	✓	✓
12	Lower Leg of North Conveyor	✓	✓
13	South Elevated Conveyor	✓	✓
14	Vertical Fly Ash Delivery Tank (Fly Ash Building)	✓	✓
15	Vehicle Repair Building	✓	✓
16	Water Supply Pump Building	✓	✓
17	Vehicle Storage Facility	✓	✓
18	Tank Support and Pump Structure	✓	✓
19	Conveyor Intermediate Support Building	✓	✓
20	Material Storage Structure	✓	✓
21	Auxiliary Generator Building	✓	✓
22	Maintenance Building	✓	✓
23	Old Elevated Transformer Housing	✓	✓
24	Transloading Conveyor	✓	✓
25	Electrical Control Building	✓	✓
26	Small Misc. Storage Structure	✓	✓
27	Pulverizer Transformer & Power Support Building	✓	✓
28	Maintenance Building & Internal Transformer	✓	✓
29	Electrical Switch and Controls Building	✓	✓
30	Equipment Storage & Repair Building	✓	✓
31	Conveyor Direction Transfer Building	✓	✓
32	Coal Hopper	✓	✓
33	Storage Building	✓	✓
34	Waste Water Treatment Basins	✓	✓
35	Waste Water Treatment Plant	✓	✓
36	Delivery Storage Building	✓	✓
37	Crib House	✓	IP
38	Switch House	✓	✓
39	Admin Building	✓	✓
40	Turbine Hall	✓	✓
41	Boiler Room #1	✓	✓
42	Boiler Room #2	✓	✓
43	Operations Support Building	✓	✓

DEFINITIONS: IP = IN PROGRESS ✓ = COMPLETE