

## **PROJECT STATUS UPDATE OCTOBER 09, 2020**

Following a series of community meetings held by the City of Chicago, on Saturday, June 27, 2020, the demolition contractor at Exchange 55, Heneghan Wrecking & Excavation Co., Inc., (Heneghan) hosted a bilingual Virtual Community Meeting to review the details about the upcoming demolition, timeline and dust mitigation plan for the remaining structures at the site of the former Crawford Station power plant located at 3501 South Pulaski Road.

[Click to see the Exchange 55 Demolition Overview presentation shared at the June 27 Virtual Community Meeting.](#)

[Click to see HRP responses to questions submitted by LVEJO for the June 27 Virtual community meeting.](#)

## **CONSTRUCTION STATUS AS OF OCTOBER 09, 2020**

Construction activity at the site is ongoing and the new building structure is approximately 62% complete. Morgan/Harbour Construction LLC is the general contractor performing and overseeing the work accordance with the requirements established by the City of Chicago and scope of work permitted under the Department of Buildings Core and Shell Permit.

Construction activities are being performed using insulated, loadbearing, precast concrete wall panels and a structural steel frame. Vertical construction work includes steel erection, precast wall installation, roof construction, and related infrastructure. This work is ongoing and will continue until the shell core work is completed.

### **Morgan/Harbour Construction LLC current construction activities include:**

- Mass grading on the West portion of the site
- Building pad construction at the Southwest end of the site to be completed by end of October 2020
- Site utility installation at the South end of the site
- Site utility installation at Northwest site area
- Precast panel installation is 90% complete and is estimated to be completed by the end of October 2020
- Structural Steel installation is 55% complete and is estimated to be completed by the end of December 2020
- Landscaping installation has commenced at the east bio-swales and will continue in the upcoming weeks
- Parking lot paving of the North and Northeast parking areas is complete
- Northwest and West parking lot paving to commence installation by end of October 2020
- Concrete pavement of east parking lot is 95% complete. The remaining concrete pavement to be complete by the end of October 2020
- Exterior precast painting is 75% complete the remaining exterior painting is to be completed by November 2020
- Interior mechanical, electrical and plumbing continues and will be ongoing until the completion of the project
- Roofing installation to commence last week of August 2020 and will be complete by the end of December 2020
- Floor pours commence October 2020

## **DEMOLITION STATUS AS OF OCTOBER 09, 2020**

The majority of demolition activity at the site is complete. The last structure to be demolished is described as Unit 7 and it is illustrated in the diagram below. The demolition of the remaining structures will be conducted using a manual process that does not utilize an implosion.

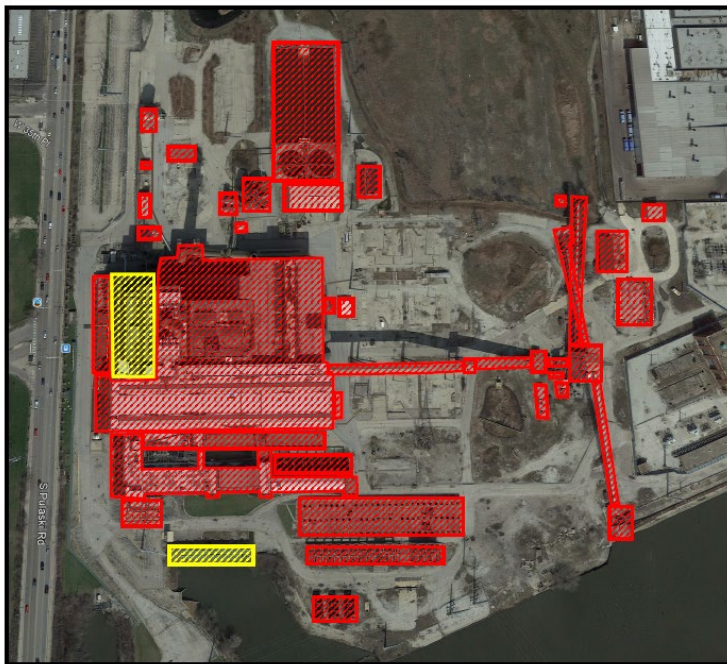
- A visual map of the current state of activity is below:
  - All areas highlighted in red have been demolished.
  - All areas highlighted in yellow are currently in progress of the demolition process
- All areas highlighted in black will be demolished by the end of September

### **Details of demolition progress include:**

Ongoing and routine dust suppression in conformance with dust mitigation plans approved by the City of Chicago

- Material sorting and recycling of demolition debris
- Interior abatement of friable-asbestos containing materials (ACM) is complete with all identified and abated ACM properly removed from the site
- Removal of Galbestos panels, a non-friable material, will be completed in end of December 2020
- Interior equipment demolition and processing of the remaining Unit 7 building is in progress and will continue through the end of November 2020
- Removal of demolition debris from the roof of the Unit 7 building will continue through the end of November 2020
- Remaining ancillary structure demolition to commence the third week of October 2020 and be completed by December 2020
- 98% of reusable demolition materials will be processed and recycled

All remaining demolition work is being conducted by Heneghan Wrecking & Excavation Co., Inc., in accordance with the dust mitigation plans that have been approved by the City of Chicago Department of Buildings and the City of Chicago Department of Public Health. The approved dust mitigation plans can be found at <https://www.crawfordstation.com/dust-mitigation-plan/>.



SCHEDULED
  IN PROGRESS
  COMPLETE

		ENVIRONMENTAL	DEMOLITION
Structures Complete		99.0%	95.5%
ID	BUILDING / STRUCTURE ID	ENVIRONMENTAL	DEMOLITION
1	Old Switch Relay Deck	✓	✓
2	Old Elevated Switch Relay Matrix	✓	✓
3	Pulverizer Structure (Crusher House)	✓	✓
4	Central Conveyor East	✓	✓
5	Central Conveyor West	✓	✓
6	Fly Ash Water Processing Tank - South	✓	✓
7	Fly Ash Water Processing Tank - North	✓	✓
8	Elevated Bottom Ash Delivery Tanks	✓	✓
9	Emergency Services Building (Locomotive Building)	✓	✓
10	Pulverizer Loading Building	✓	✓
11	Upper Leg of North Conveyor	✓	✓
12	Lower Leg of North Conveyor	✓	✓
13	South Elevated Conveyor	✓	✓
14	Vertical Fly Ash Delivery Tank (Fly Ash Building)	✓	✓
15	Vehicle Repair Building	✓	✓
16	Water Supply Pump Building	✓	✓
17	Vehicle Storage Facility	✓	✓
18	Tank Support and Pump Structure	✓	✓
19	Conveyor Intermediate Support Building	✓	✓
20	Material Storage Structure	✓	✓
21	Auxiliary Generator Building	✓	✓
22	Maintenance Building	✓	✓
23	Old Elevated Transformer Housing	✓	✓
24	Transloading Conveyor	✓	✓
25	Electrical Control Building	✓	✓
26	Small Misc. Storage Structure	✓	✓
27	Pulverizer Transformer & Power Support Building	✓	✓
28	Maintenance Building & Internal Transformer	✓	✓
29	Electrical Switch and Controls Building	✓	✓
30	Equipment Storage & Repair Building	✓	✓
31	Conveyor Direction Transfer Building	✓	✓
32	Coal Hopper	✓	✓
33	Storage Building	✓	✓
34	Waste Water Treatment Basins	✓	✓
35	Waste Water Treatment Plant	✓	✓
36	Delivery Storage Building	✓	✓
37	Crib House	✓	✓
38	Switch House	✓	✓
39	Admin Building	✓	✓
40	Turbine Hall	✓	✓
41	Boiler Room #1	✓	ID
42	Boiler Room #2	✓	✓
43	Operations Support Building	✓	✓

## EXCHANGE 55 - DEMOLITION PROGRESS UPDATE